

Steps for using the Common Sense Wirewinder

1. Prepare wire for rolling

Remove wire from posts. Clips should be removed from the wire and wire should be laid out in an area where it will not catch obstacles. Tie a weight to the far end of the wire to cause drag or resistance and even pulling. A log chain works well.

2. Attach wirewinder

Can be attached on any of the following that have hydraulics:

- 3-point hitch
- the front end of loader bucket
- skid steer
- hydraulic bale bed

3. Hook up hydraulic hoses

Make sure flow control valve is in the OFF position. Unit is plumbed so fluid will flow back to tractor with flow control valve in the OFF position. Engage hydraulics so flow is going to the flow control valve. Engage flow control valve to make sure shaft is turning in a counter-clockwise rotation. If shaft is turning the wrong direction, **reverse the hoses**.

4. Attach wire

Wire needs to go under the level wind pulley and over the spool assembly. Wrap wire around spool assembly three to four times. Tie wire to itself. **DO NOT ATTACH WIRE TO SPOOL** – this will make it impossible to remove the roll of wire from the spool when you have finished winding. Engage the flow control valve to cause tension on the wire.

Adjust upper link of the 3-point hitch or tilt cylinder so that there is a slight dip in the wire under the level wind pulley. Do NOT put more than a slight dip in the wire – this will cause undue wear and tear on the level wind assembly.

Level wind assembly should be oiled every one to two rolls that you wind. Oil the level wind assembly by dripping a trail of oil over the threads of the level wind. This will lubricate and wash off excess dirt that will cause undue wear on the unit. If you oil the assembly, the unit will give you many years of service.

5. Adjusting the by-pass/"clutch"

There are two different ways to use this winder. It can be used for either good wire or rusty wire:

- **Good wire** - If wire is in good condition and can handle the pull, you can pull ¼ mile of barbwire to you while you sit still. If machine will not pull wire while you are sitting in one spot, there is a cap on the bottom of the flow control valve that can be removed. Inside of the cap there is a set- screw that can be used to tighten the amount of power the unit has. Turn to the right to increase the pressure. This setting should NOT be used if wire is in poor condition, as the wire would break and cause injury to the operator.
- **Rusty wire** - The other way to use the Common Sense wirewinder is to loosen the pressure by turning the set-screw to the left to decrease pressure. This takes away power from the machine so it will try to pull but it cannot. You will need to drive into the wire and the winder will begin to roll up the wire as you back into it. Flow control valve should be adjusted so that it is trying to pull wire faster than you are driving into it so it will keep pressure on the wire, and you are not driving into it faster than the

machine is rolling the wire in. Clutch will not burn up like a friction clutch because it is made to allow extra fluid to bypass and flow back to the tractor.

6. High tensile wire

When rolling high tensile wire take off all three barb wire spool pieces and replace with the high tensile spool, set screw in. Pull the bolt that holds the level wind shaft to frame and replace with wire guide using the same bolt. Follow the directions for winding good wire.

7. Soft electric wire

When rolling soft electric wire take off all three barb wire pieces and replace with soft electric spool, set screw in. Follow directions for winding good wire.

8. Rolling the wire

If you are rolling up good wire, turn flow control valve slowly to begin rolling. Start at a slow pace and gradually increase speed by continuing to slowly turn the flow control valve. Bring wire in at a safe, controllable pace.

If you are rolling up rusty wire, adjust speed on flow control valve to about the middle of the dial. From inside your tractor, engage hydraulics and begin driving into the wire. Make sure setting is set so that it is rolling the wire faster than you are driving into it.

9. Removing roll of wire

Loosen set-screw on the keeper disk. Remove keeper disk and set aside. Next, remove spool from the shaft by pulling the large circular hoop on the outside of the spool. Wire can be removed from the spool by continuing to hold onto the large circular hoop and dropping the bottom of the spool assembly onto a hard surface. This will release the wire from the spool assembly.

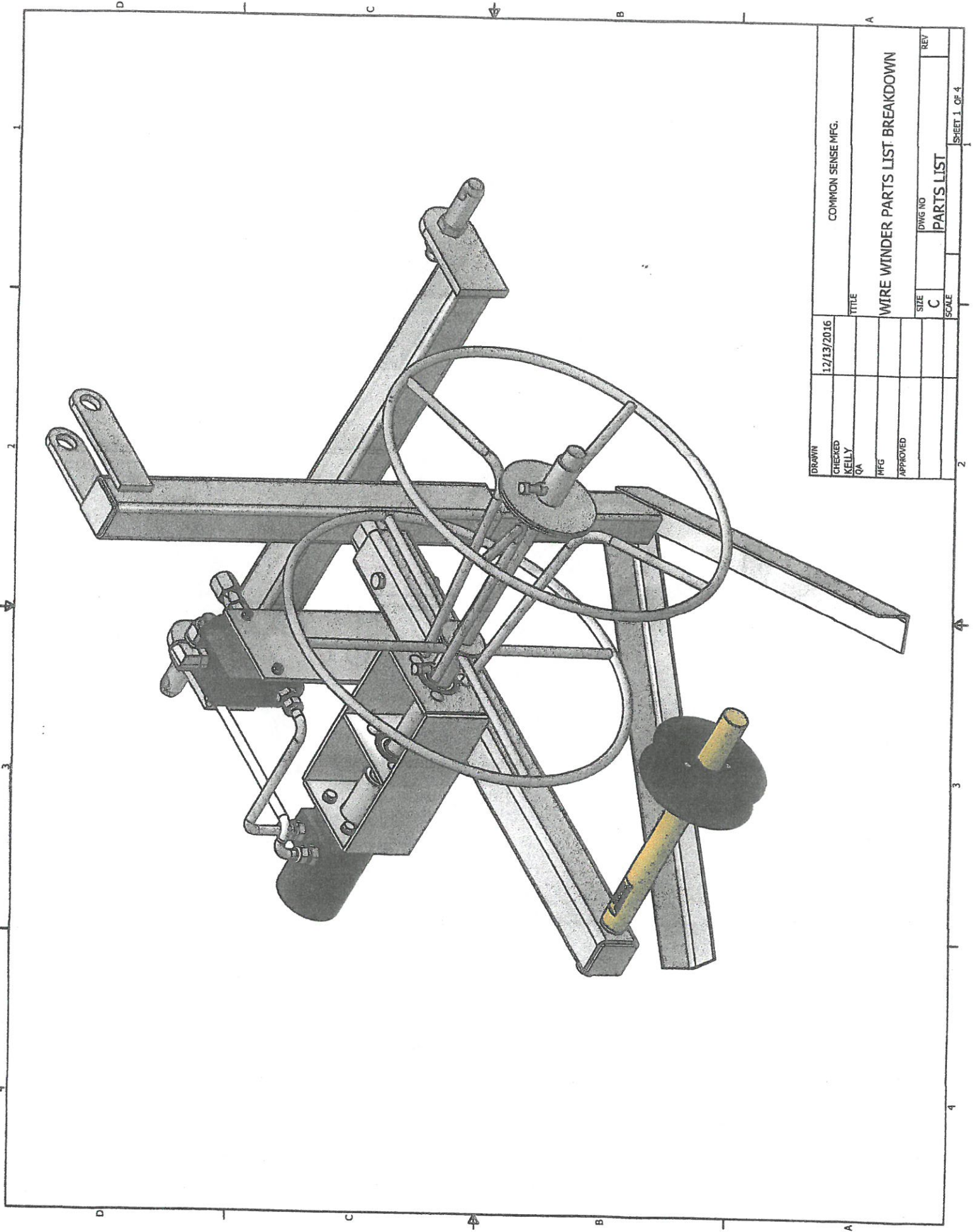
10. Reusing wire

Reinstall roll of wire onto the outer spool assembly. Then place the spool assembly onto the winder. Reinstall the keeper plate and tighten the set- screw. Put your tractor hydraulics in the float position and set the speed control on the flow control valve to the fastest speed. If you do not have a tractor with a float position, you can couple the two ends of hydraulic hose together to create a loop, so fluid can flow in a circle. Next, tie the end of the wire to a post and drive away from the post. You can decrease the speed lever on the flow control valve gradually to increase the amount of back pressure to keep the wire from bouncing or free spooling.

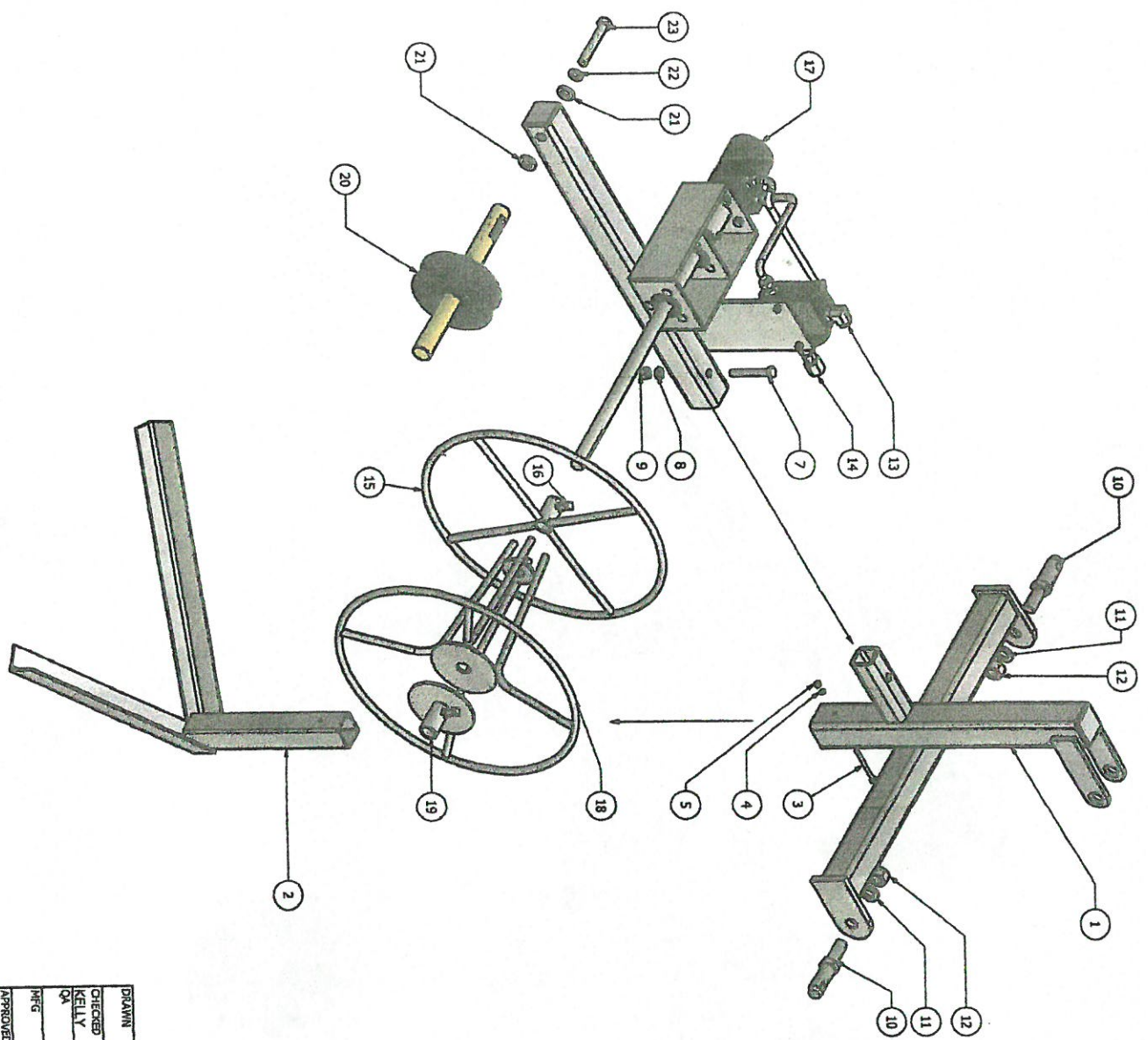
Specifications

- Three-point hitch is Cat. II.
- Three-point hitch can be removed and a different insert can be made to install unit to a skid steer, loader bucket, hydraulic bale bed, or other piece of equipment.
- **Hydraulic fittings are ½ inch pipe thread.** A different length of hose may be needed for each application, therefore hoses are not included with the winder.

Additional information: For parts or questions, contact Brad Young at 866-373-2514.



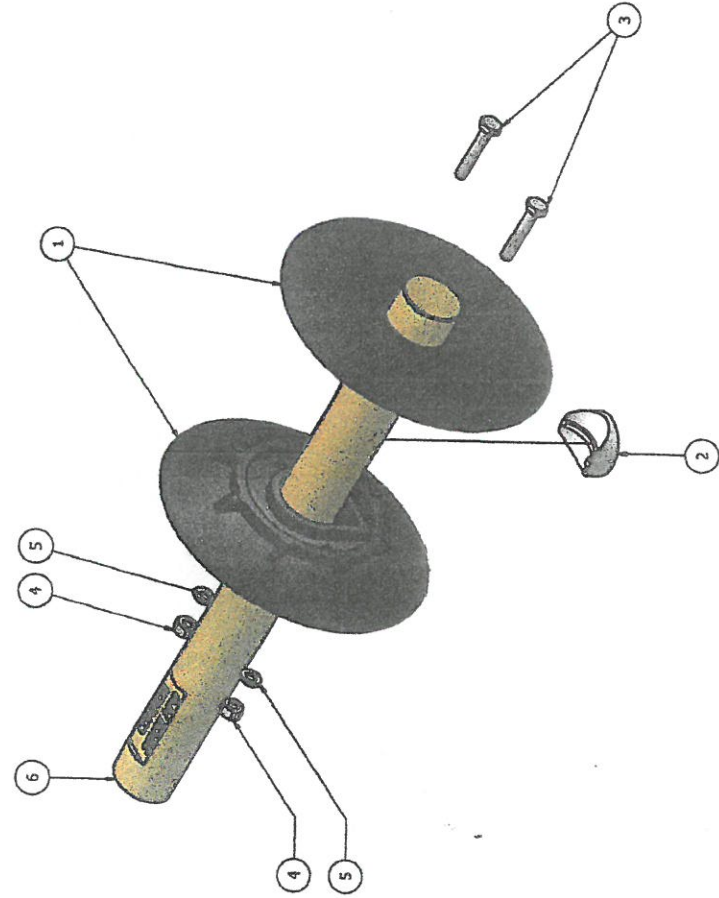
DRAWN		12/13/2016	COMMON SENSE MFG.	
CHECKED	KELLY		TITLE	
QA			WIRE WINDER PARTS LIST BREAKDOWN	
MFG			DWG NO	
APPROVED			SCALE	
			PARTS LIST	
			REV	
			SHEET 1 OF 4	



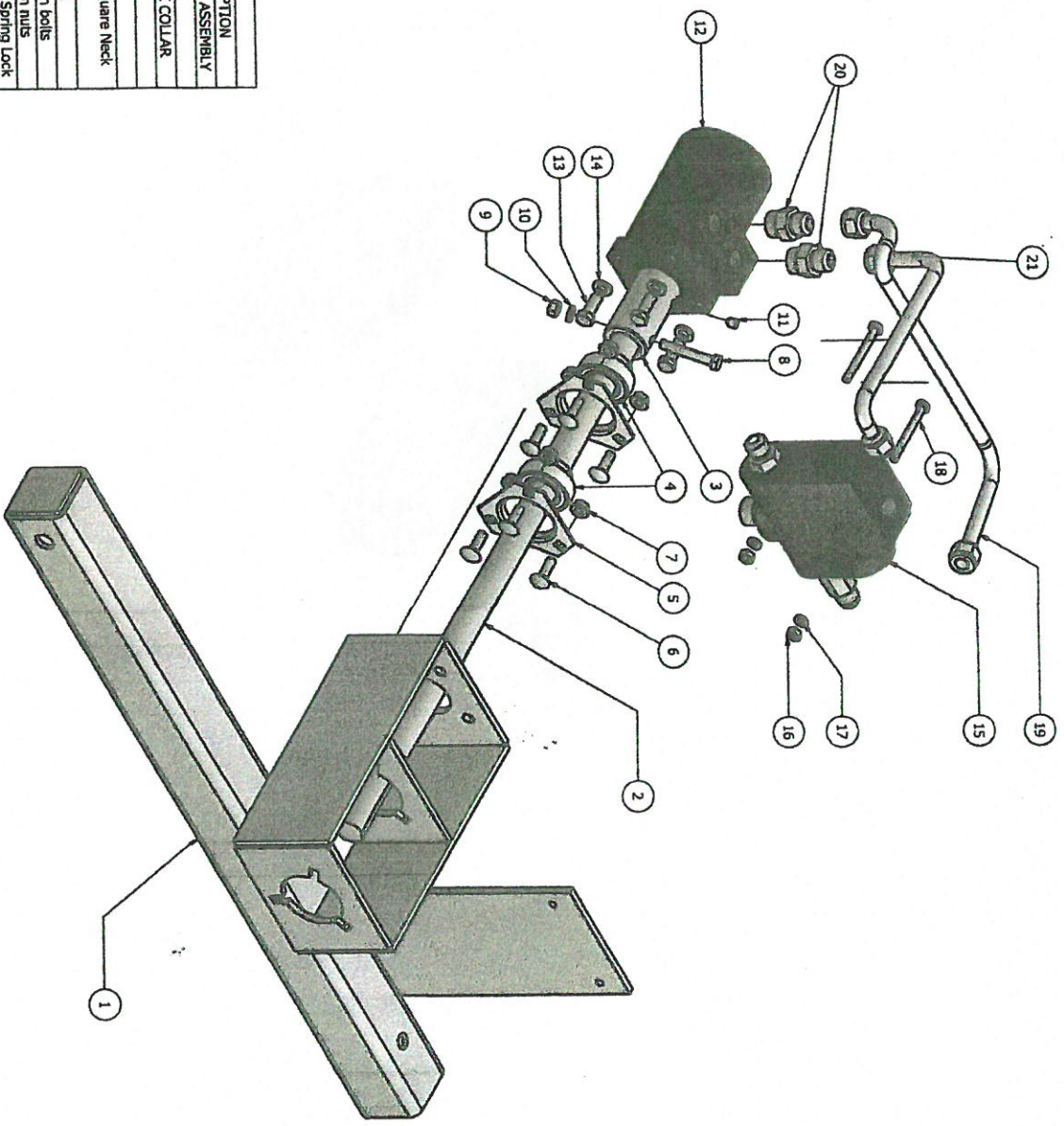
PARTS LIST			
ITEM	QTY	PART NUMBER	DESCRIPTION
1	1	CSWV3PT1	3 POINT HITCH MOUNT
2	1	CSWV3PT1	WIRE WINDER STAND
3	1	AS 2465 - 1/4 x 3 UNC	Unified hexagon bolts
4	1	ASME B18.21.1 - 1/4	Regular Helical Spring Lock Washers(Inch Series)
5	1	AS 2465 - 1/4 UNC	Unified hexagon nuts
7	1	AS 2465 - 1/2 x 3 1/2 UNC	Unified hexagon bolts
8	1	ASME B18.21.1 - 1/2	Regular Helical Spring Lock Washers(Inch Series)
9	1	AS 2465 - 1/2 UNC	Unified hexagon nuts
10	2	CSWV3PT1	3 POINT HITCH PIN
11	2	ASME B18.21.1 - 7/8	Regular Helical Spring Lock Washers(Inch Series)
12	2	AS 2465 - 7/8 UNF	Unified hexagon nuts
13	1	CSWV3PT1	90 DEGREE FITTING
14	1	CSWV3PT1	FITTING ADAPTER
15	1	CSWV3PT1	WIRE INNER SPOOL
16	1	ANSI B18.21 - 3/8-16x1.25	Unified Standard Square Bolts
17	1	CSWV3PT1 (SHIPPED ASSEMBLED)	TOOL BAR ASSEMBLY
18	1	CSWV3PT1	TAPERED OUTER SPOOL
19	1	CSKD1	KEEPER DISC
20	1	CSLWA1	WINDER PULLEY SHAFT ASSEMBLY
21	2	ASTM F436 - 5/8	Washer A
22	1	ASME B18.21.1 - 5/8	Regular Helical Spring Lock Washers(Inch Series)
23	1	AS 2465 - 5/8 x 4 UNC	Unified hexagon bolts

DRAWN		12/13/2016		COMMON SENSE MFG.	
CHECKED				TITLE	
KELLY				WIRE WINDER PARTS LIST BREAKDOWN	
QA				SIZE	
MFG				C	
APPROVED				DWG NO	
				PARTS LIST	
				SHEET 2 OF 4	

PARTS LIST			ITEM	QTY	PART NUMBER	DESCRIPTION
1	2	CSLWP1-A	1	2	CSLWP1-A	WIRE WINDER PULLY SIDE
2	1	CSLWB1	2	1	CSLWB1	WIRE WINDER BUTTON
3	2	AS 2465 - 1/4 x 1 1/2 UNC	3	2	AS 2465 - 1/4 x 1 1/2 UNC	Unified hexagon bolts
4	2	AS 2465 - 1/4 UNC	4	2	AS 2465 - 1/4 UNC	Unified hexagon nuts
5	2	ASME B18.21.1 - 1/4	5	2	ASME B18.21.1 - 1/4	Regular Helical Spring Lock Washers(Inch. Series)
6	1	CSLWS1	6	1	CSLWS1	WIRE WINDER SHAFT



DRAWN	12/13/2016	COMMON SENSE MFG.	
CHECKED		TITLE	
KELLY		WIRE WINDER PARTS LIST BREAKDOWN	
QA		REV	
MFG		SCALE	
APPROVED		DWG NO	
		PARTS LIST	
		SHEET 4 OF 4	



PARTS LIST			DESCRIPTION	
ITEM	QTY	PART NUMBER		
1	1	CSWMTB1	TOOL BAR SUB ASSEMBLY	
2	1	CSWMTB1-G	DRIVE SHAFT	
3	1	KEYED LOCK COLLAR	1" KEYED LOCK COLLAR	
4	2	SB205-1A		
5	2	TS2MSTR		
6	6	ANSI B18.5 - 5/16-18 UNC	Round Head Square Neck Bolt	
7	6	JF - 10,3125 - 18	Hex Flange Nut	
8	1	AS 2465 - 5/16 x 2 UNC	Unified hexagon bolts	
9	1	AS 2465 - 5/16 UNC	Unified hexagon nuts	
10	1	ASME B18.21.1 - 5/16	Regular Helical Spring Lock Washers(Inch Series)	
11	1	ANSI B18.3 - 5/16-18 UNC	Type B - Hexagon Socket Set Screw - Cup Point	
12	1	CSWWM1	HYDRAULIC MOTOR	
13	4	AS 2465 - 3/8 x 1 UNC	Unified hexagon bolts	
14	4	ASME B18.21.1 - 3/8	Regular Helical Spring Lock Washers(Inch Series)	
15	1	CSWVFC1	FLOW CONTROL VALVE	
16	2	AS 2465 - 1/4 UNC	Unified hexagon nuts	
17	2	ASME B18.21.1 - 1/4	Regular Helical Spring Lock Washers(Inch Series)	
18	2	AS 2465 - 1/4 x 2 1/2 UNC	Unified hexagon bolts	
19	1	CSWWSL1	LONG HYDRAULIC LINE	
20	2	CSWWSL1	STRAIGHT FITTING	
21	1	CSWWSL1	SHORT HYDRAULIC LINE	

DRAWN		12/13/2016		COMMON SENSE MFG.	
CHECKED				TITLE	
KELLY				WIRE WINDER PARTS LIST BREAKDOWN	
QA				MFG	
APPROVED				SIZE	
				C	
				DWG NO	
				PARTS LIST	
				REV	
				SCALE	
				SHEET 3 OF 4	